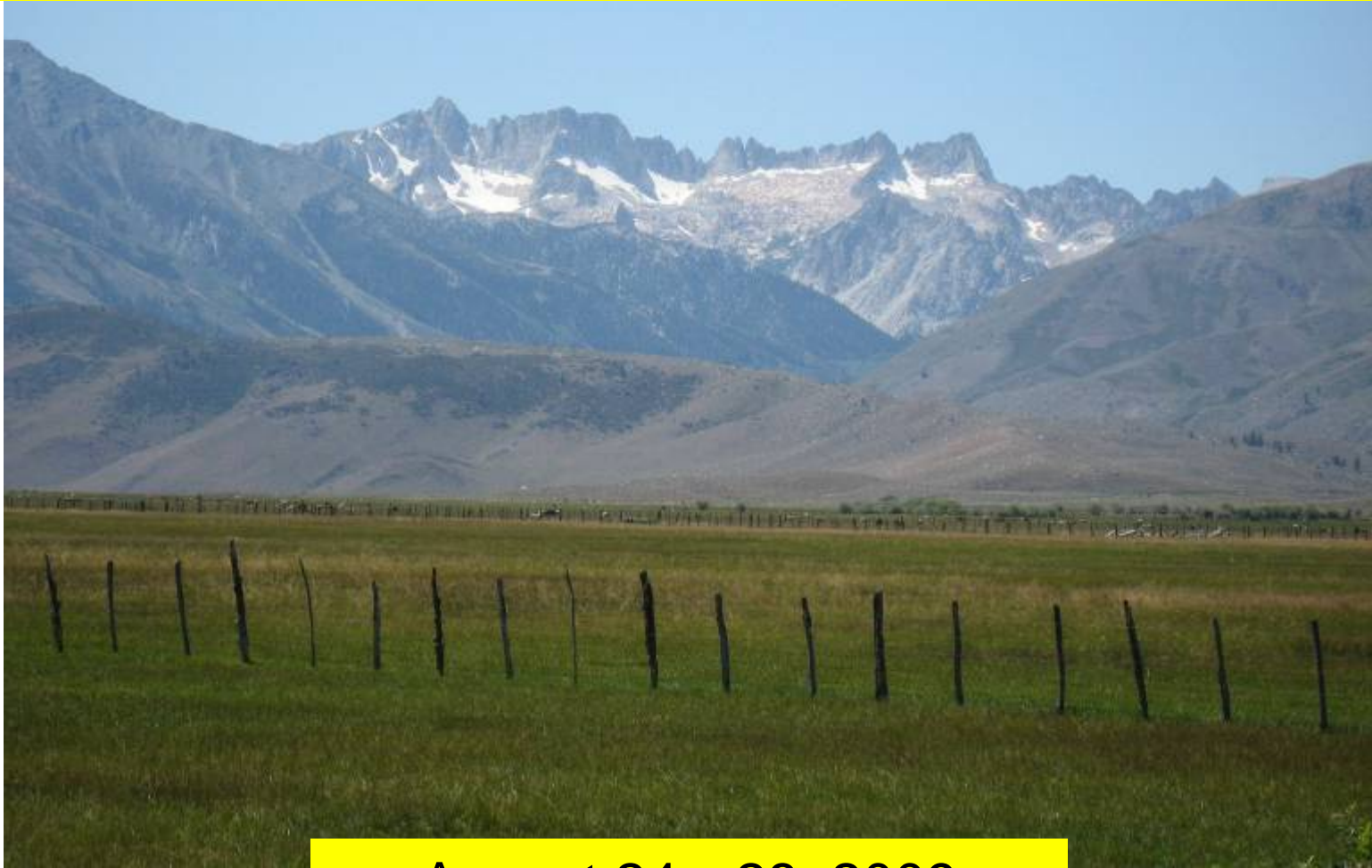


# A Leisurely Circum-Ambulation Around Sawtooth Ridge, Sierra Nevada

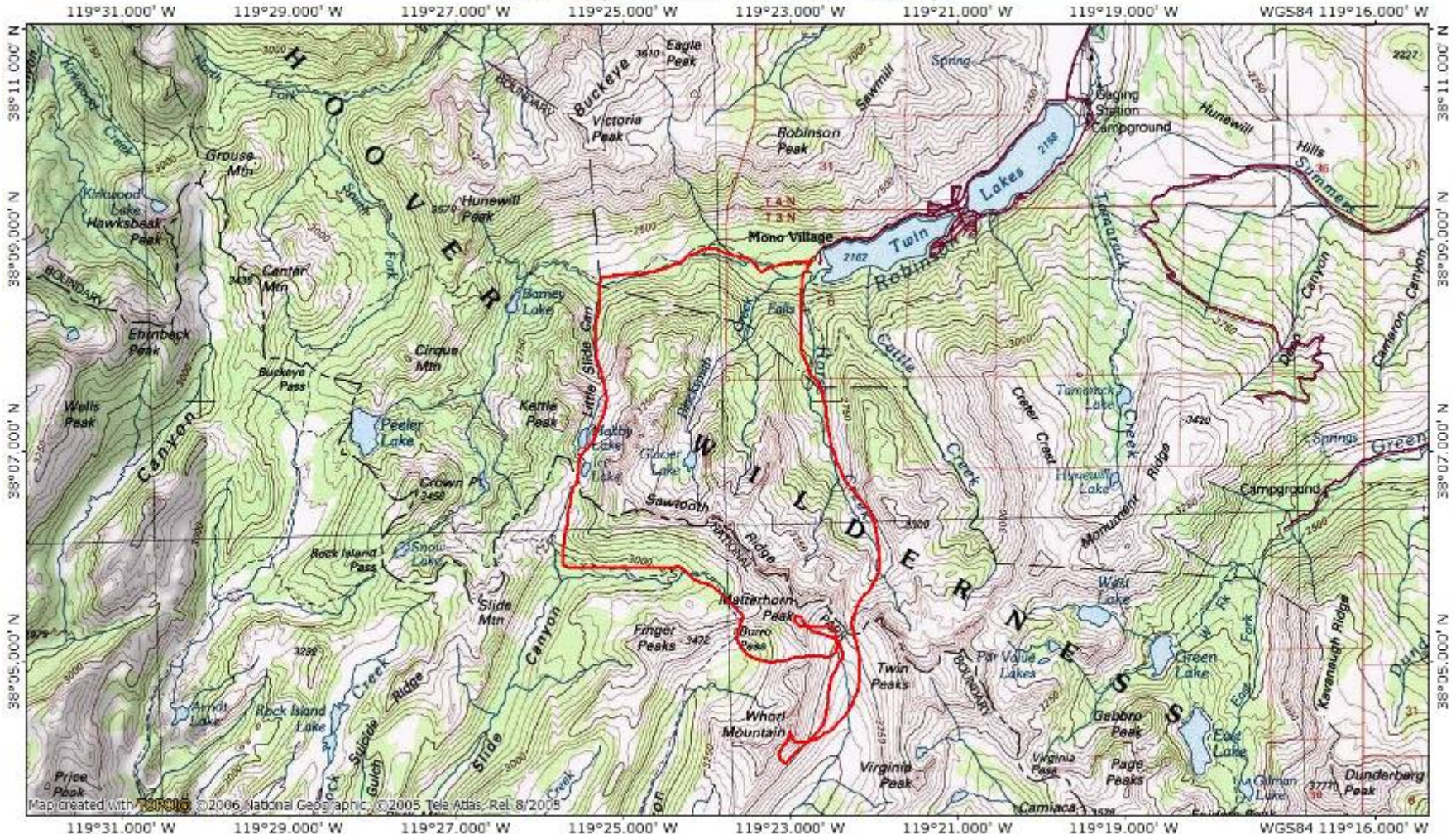


August 24—28, 2009

Pics by Judy Boore

This is our route (clockwise), except for the climbs of Whorl Mountain and Matterhorn Peak (Dave climbed them 8 years ago)

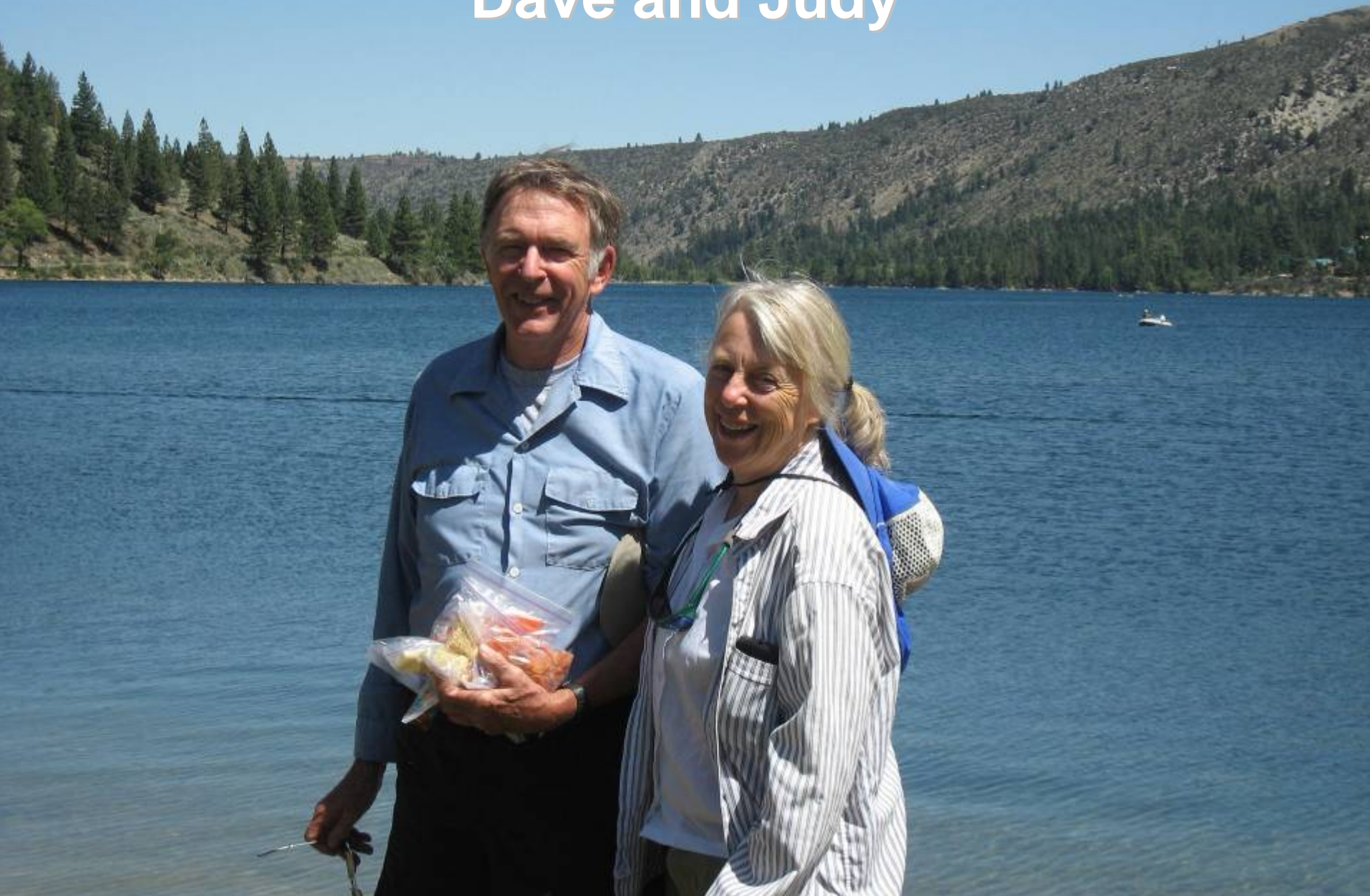
TOPO! map printed on 10/28/08 from "Untitled.tpo"



# Doug Haner and Dave Boore at the start



# Dave and Judy



**Looking down on Upper Twin Lake; the  
previous pictures were taken here**



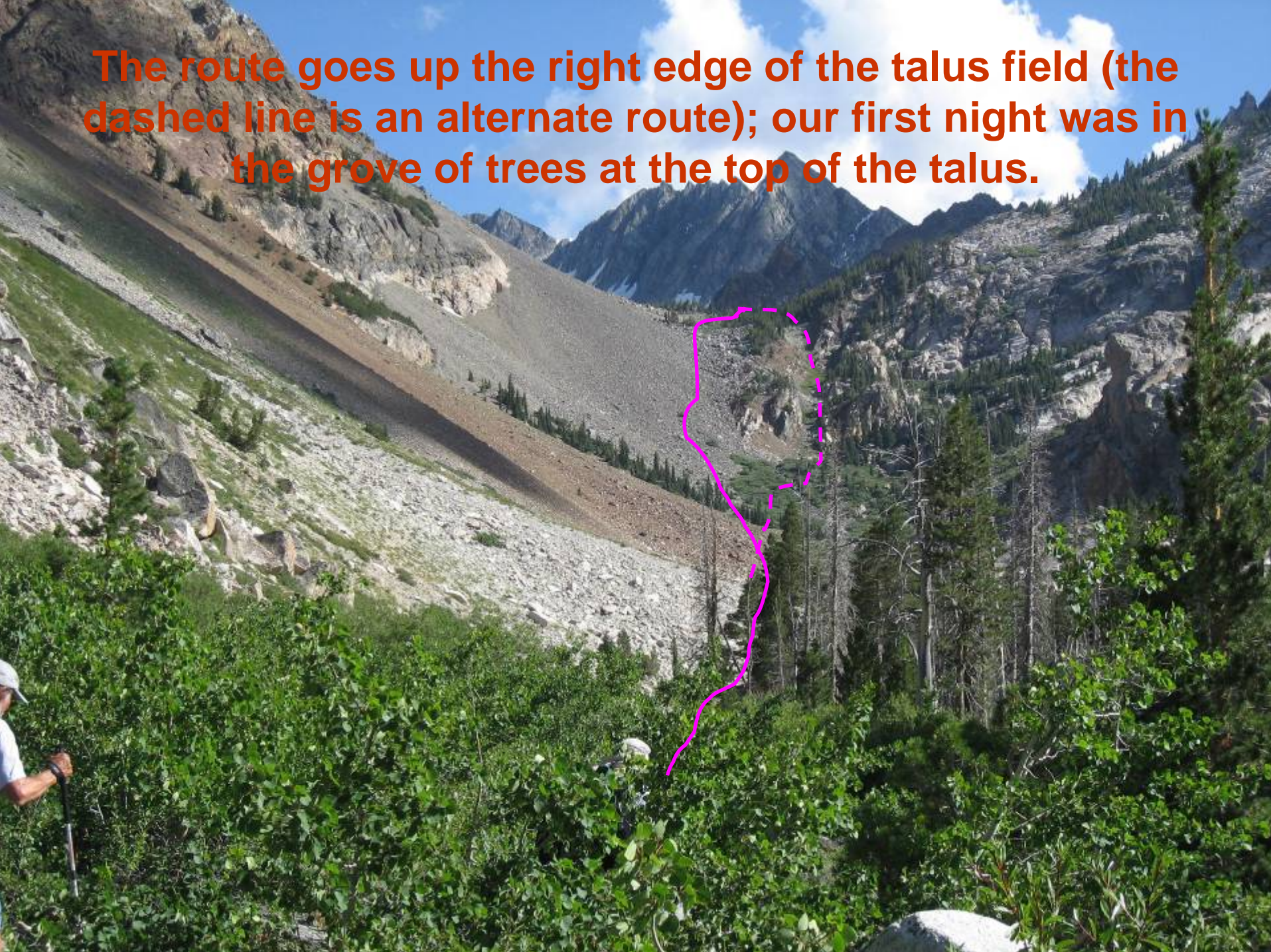
# Our first view of Matterhorn Peak



**A closer look at Matterhorn Peak; Dave led a route up the arete 48 years ago**



**The route goes up the right edge of the talus field (the dashed line is an alternate route); our first night was in the grove of trees at the top of the talus.**





**Making our way through some large boulders.**



# Looking back down Horse Creek Canyon



A close-up photograph of a Coville's Columbine flower growing in a rocky crevice. The flower is white with yellow centers and pinkish-red sepals. A bud is visible to the left. The plant has green, lobed leaves. The background is a rough, textured rock face with some lichen. The text "Moments of beauty amongst the harsh terrain—Coville's Columbine" is overlaid in white.

**Moments of beauty amongst the harsh terrain—Coville's Columbine**



**The last meadow before climbing to Horse Creek Pass (Twin Peaks in the background)**

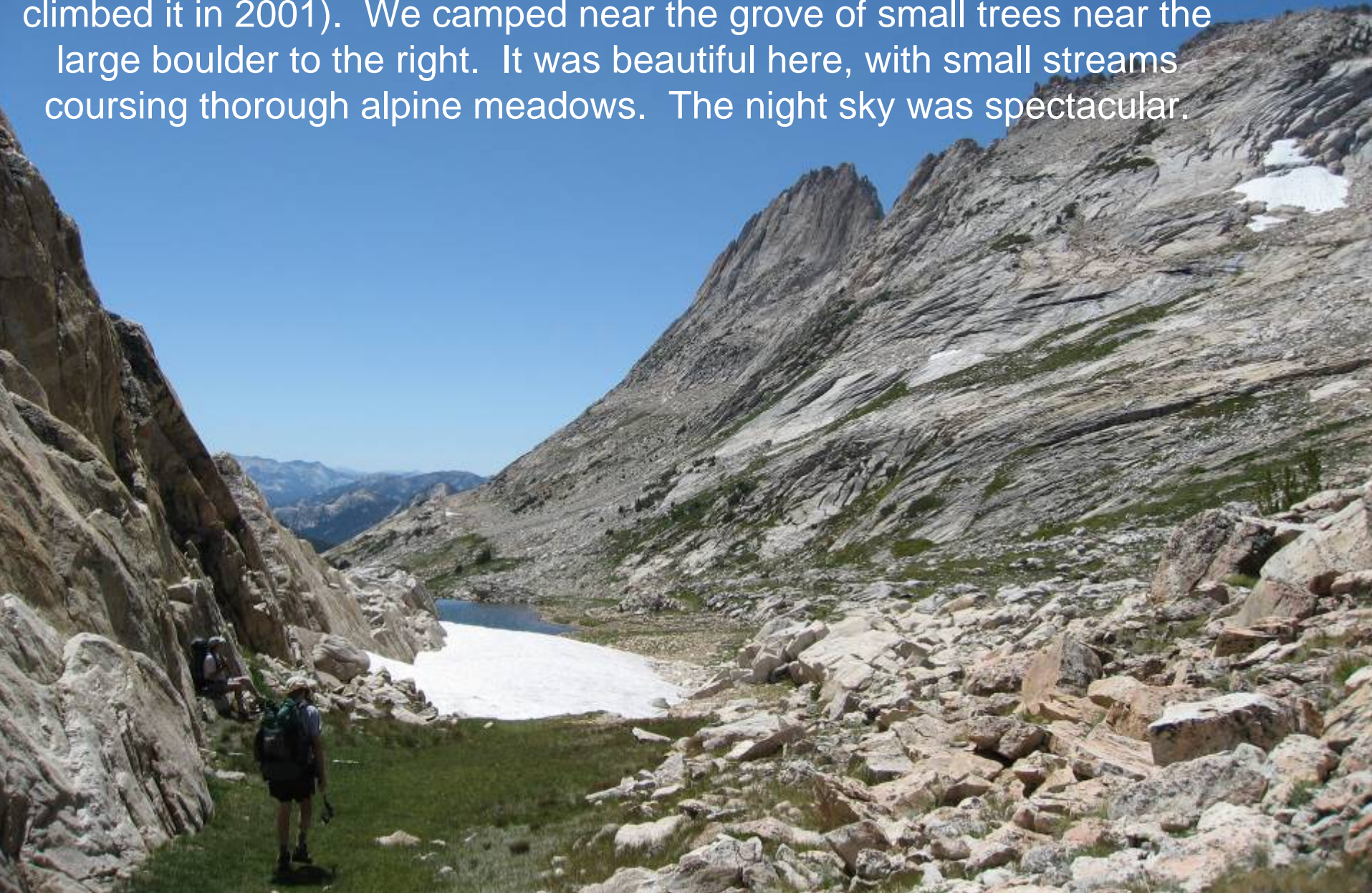
# Climbing toward the pass



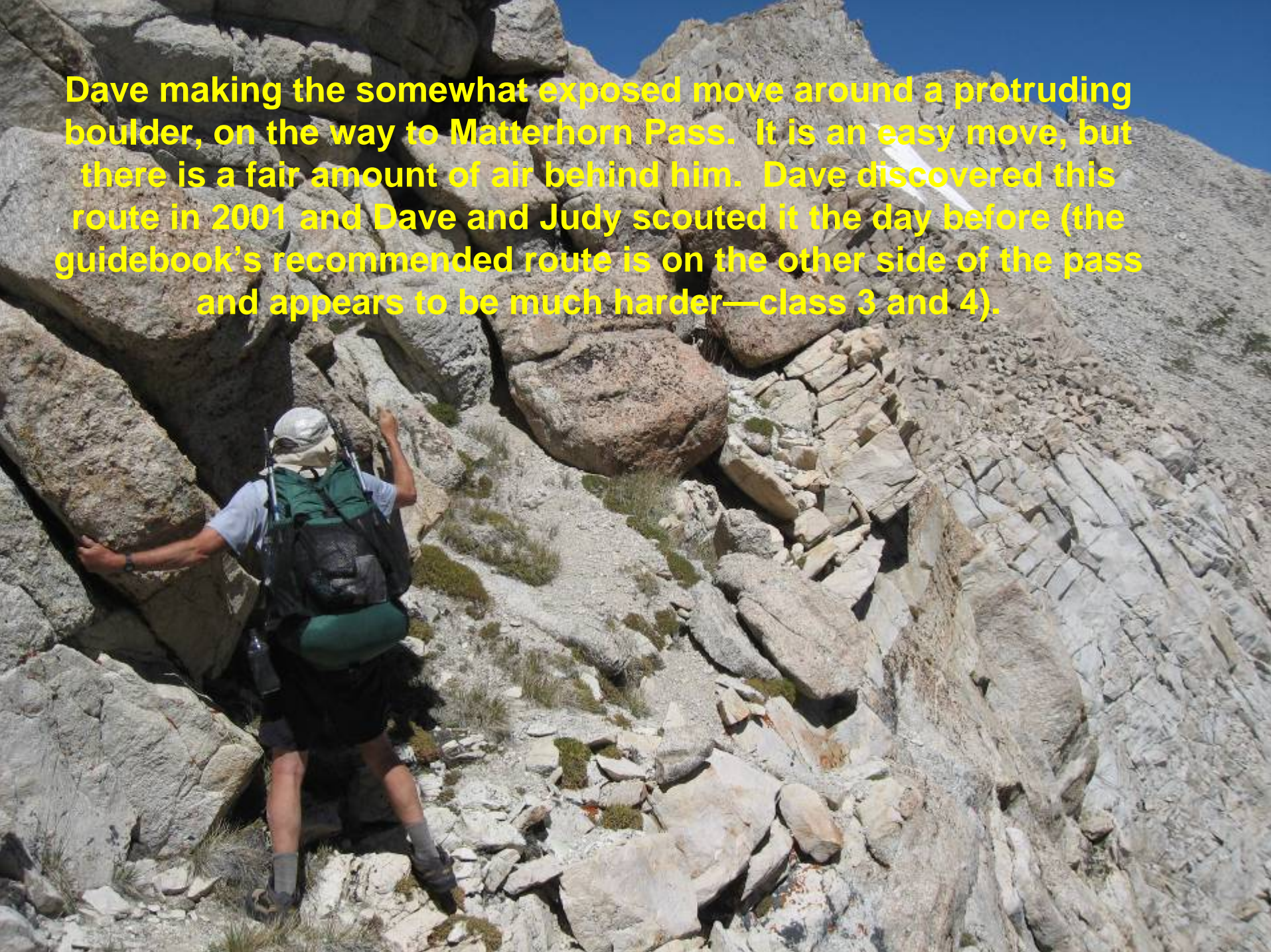
Getting closer



At last, the pass! We've just crossed into Yosemite National Park at the head of Spiller Canyon, with Whorl Peak in the distance (Dave climbed it in 2001). We camped near the grove of small trees near the large boulder to the right. It was beautiful here, with small streams coursing thorough alpine meadows. The night sky was spectacular.

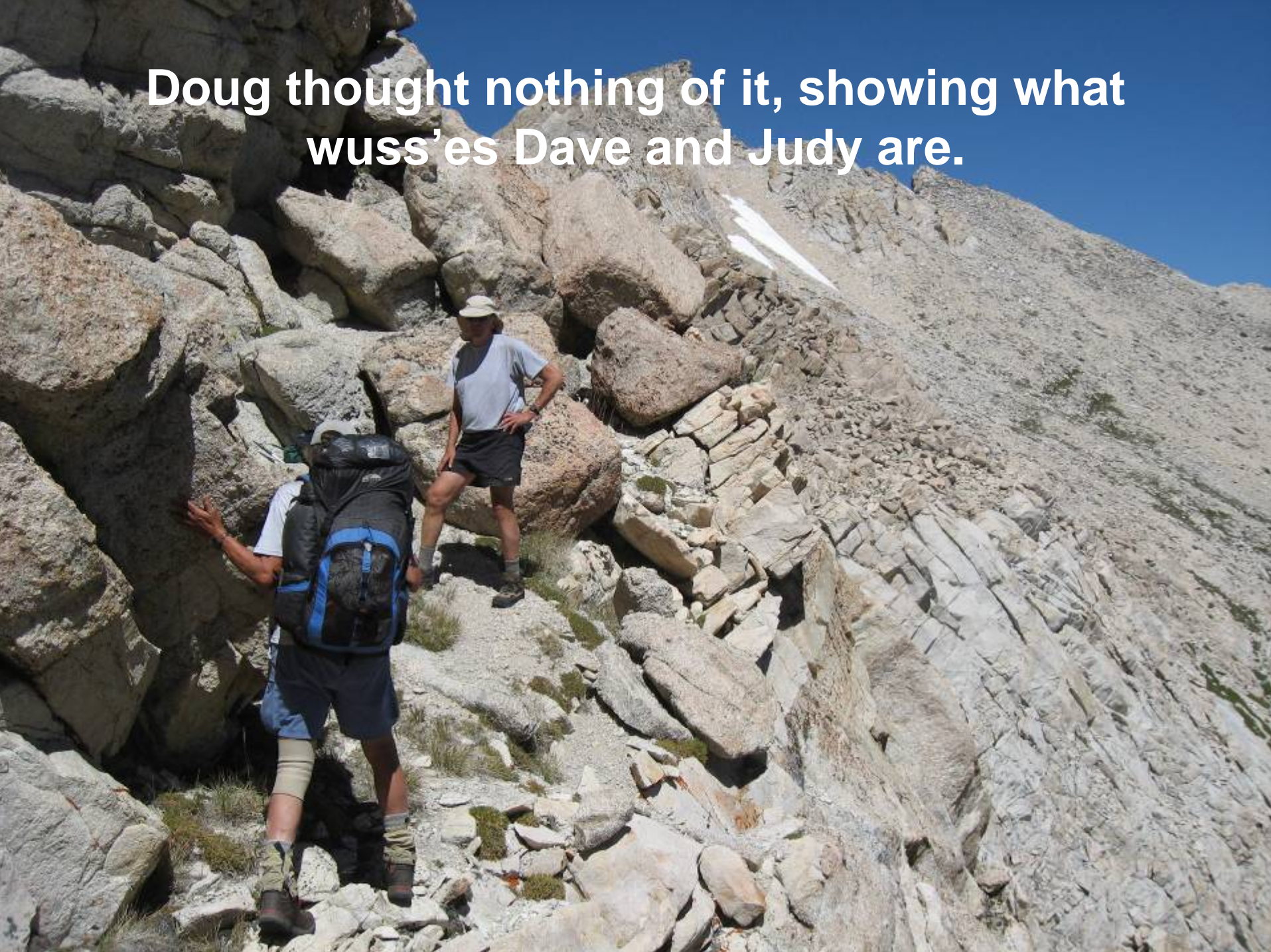


**Dave making the somewhat exposed move around a protruding boulder, on the way to Matterhorn Pass. It is an easy move, but there is a fair amount of air behind him. Dave discovered this route in 2001 and Dave and Judy scouted it the day before (the guidebook's recommended route is on the other side of the pass and appears to be much harder—class 3 and 4).**





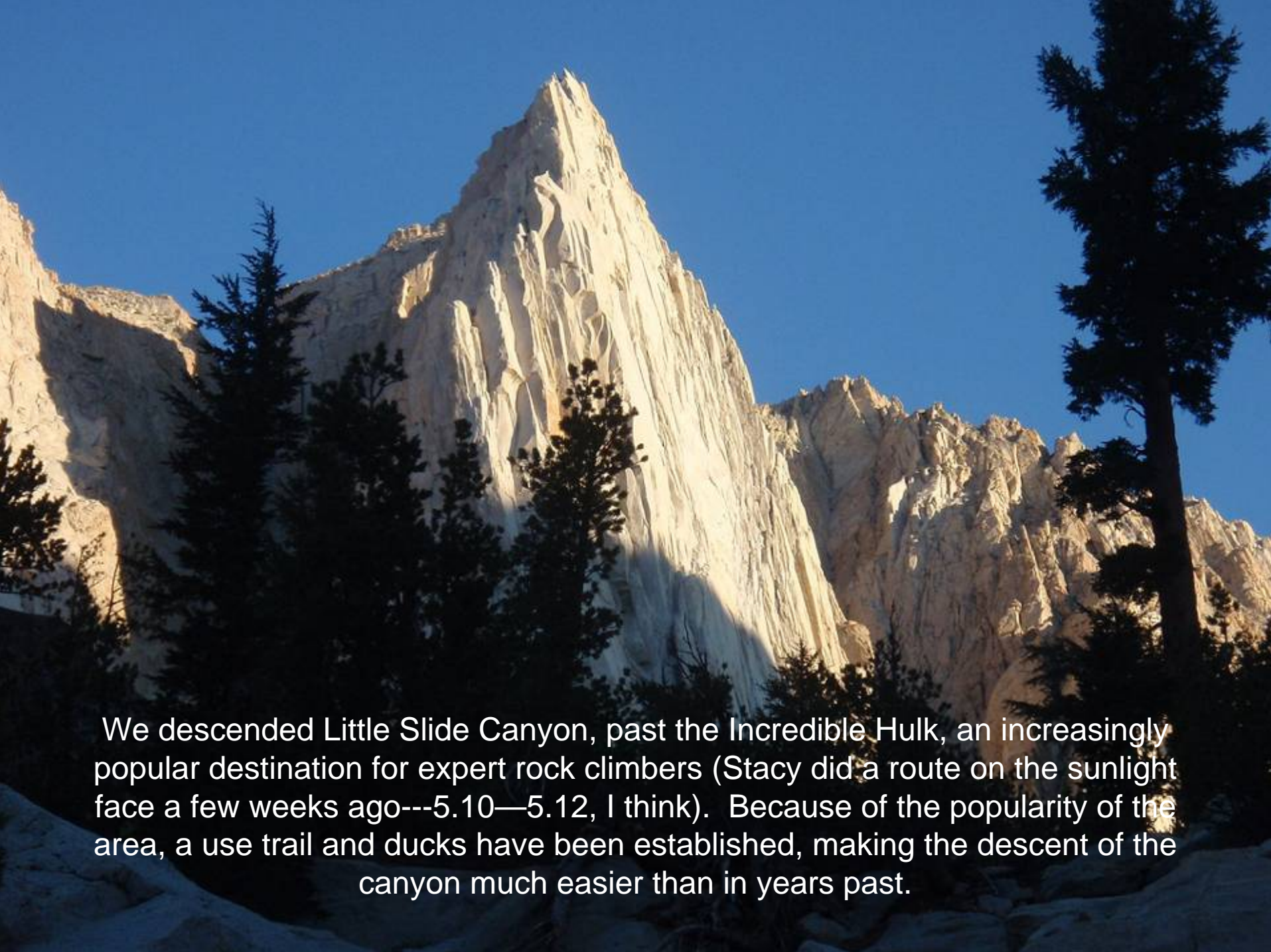
**Doug thought nothing of it, showing what wuss'es Dave and Judy are.**



A panoramic view of a mountain canyon. In the foreground, a rocky slope descends towards a valley. A long, narrow strip of snow or ice runs diagonally across the lower part of the slope. The middle ground shows a wide, rocky valley floor with sparse vegetation. In the background, a large, rugged mountain peak with a flat top dominates the horizon. Other smaller peaks and ridges are visible in the distance under a clear blue sky.

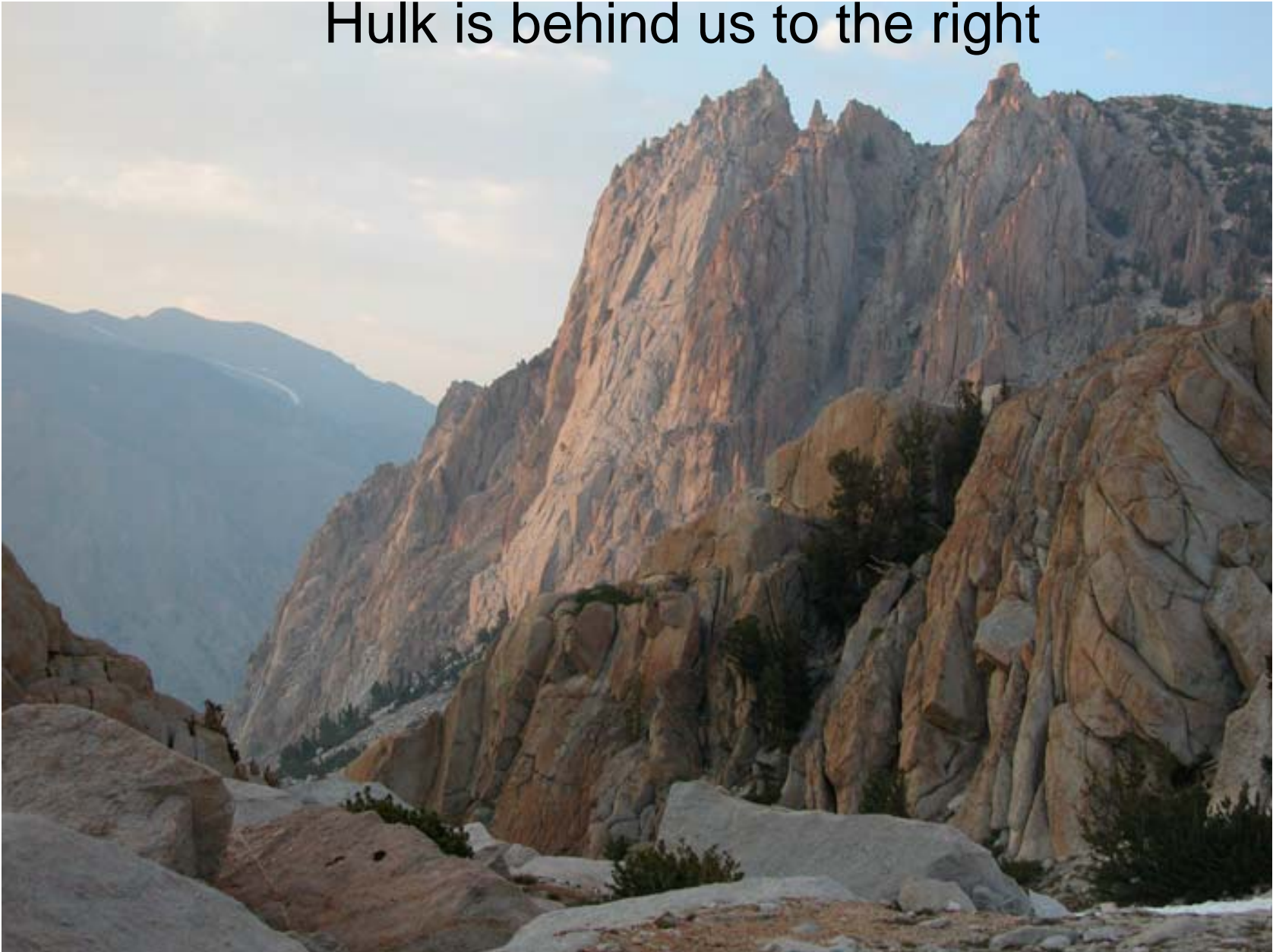
**The view into Matterhorn Canyon from the top of Matterhorn Pass, with the Finger Peaks in the background.**

And at this point Judy's camera battery ran out of power, so I will include a few pictures that I stole from the web. I can say that we descended into Matterhorn Canyon, picked up the trail over Burro Pass, and camped above Paiute Creek in Slide Canyon—that proved to be our nicest campground, in a sheltering grove of trees, with beautiful white boulders set into lush green meadows.



We descended Little Slide Canyon, past the Incredible Hulk, an increasingly popular destination for expert rock climbers (Stacy did a route on the sunlight face a few weeks ago---5.10—5.12, I think). Because of the popularity of the area, a use trail and ducks have been established, making the descent of the canyon much easier than in years past.

# Looking down Little Slide Canyon; the Incredible Hulk is behind us to the right



# Looking up Little Slide Canyon



And after wading Robinson Creek, walking across a beaver dam, and mucking through the beaver-created marsh, we hiked back to the car and drove to Bridgeport for dinner and to our cabins at Mill Creek for showers